

CRAVEN TERRACE, LONDON, W2

£2,400 PER CALENDAR

Goldman Greg are delighted to present this beautiful 1-bed apartment within a charming mansion house in Bayswater.

The apartment is set on the first floor, above a wine shop and is made up of a bright reception room with huge sash windows, open plan to a fully fitted kitchen, a comfortable double bedroom and a fully tiled bathroom.

This charming property is located between Queensway, Lancaster Gate (Central line) and Bayswater (District and Circle) underground stations with fantastic transport links available. Hyde Park is a stone's throw away, while the fantastic weekend market of Portobello Road is around a 10 minute walk away.

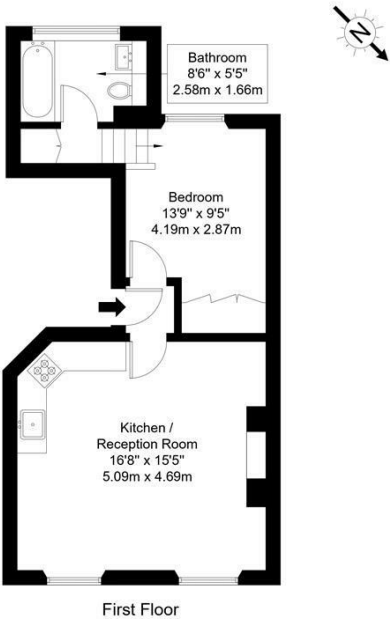
Offered furnished. Available 18th Feb 2026.



Goldman Greg

Craven Terrace, W2 9BD

Approx Gross Internal Area = 42.9 sq m / 462 sq ft



Ref :
The Floor plan is not to scale and measurements and areas shown are approximate and therefore should be used for illustrative purposes only. The plan has been prepared in accordance with the RICS code of Measuring Practice and whilst we have confidence in the information produced it must not be relied on. Maximum lengths and widths are represented on the floor plan. If there is any aspect of particular importance, you should carry out or commission your own inspection of the property.
Copyright @ BLEUPLAN



Energy Efficiency Rating		
	Current	Potential
Very energy efficient - lower running costs		
(92 plus) A		
(81-91) B		
(69-80) C		
(55-68) D	63	73
(39-54) E		
(21-38) F		
(1-20) G		
Not energy efficient - higher running costs		
England & Wales		EU Directive 2002/91/EC

Agents Note: Whilst every care has been taken to prepare these particulars, they are for guidance purposes only. All measurements are approximate and are for general guidance purposes only and whilst every care has been taken to ensure their accuracy, they should not be relied upon and potential buyers/tenants are advised to recheck the measurements

Goldman Greg
143 Leman Street
London
E1 8EY

02079770018
leads@goldmangreg.co.uk
www.goldmangreg.co.uk

